

Postal Code 78617

Residential Statistics



August 2023

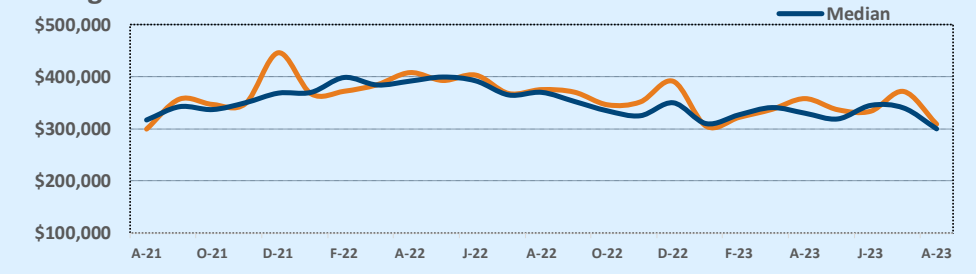
Listings	This Month			Year-to-Date		
	Aug 2023	Aug 2022	Change	2023	2022	Change
Single Family Sales	20	13	+53.8%	91	117	-22.2%
Condo/TH Sales	1	1	--	28	8	+250.0%
Total Sales	21	14	+50.0%	119	125	-4.8%
New Homes Only	2	4	-50.0%	29	22	+31.8%
Resale Only	19	10	+90.0%	90	103	-12.6%
Sales Volume	\$6,489,890	\$5,253,735	+23.5%	\$39,626,953	\$48,319,232	-18.0%
New Listings	32	25	+28.0%	173	195	-11.3%
Pending	11	N/A	N/A	17	N/A	N/A
Withdrawn	2	--	--	10	--	--
Expired	1	--	--	13	--	--
Months of Inventory	2.0	3.7	-46.2%	N/A	N/A	--

Price Range	This Month			Year-to-Date		
	New	Sales	DOM	New	Sales	DOM
\$149,999 or under	--	--	--	--	--	--
\$150,000- \$199,999	--	--	--	--	1	53
\$200,000- \$249,999	3	1	14	6	4	19
\$250,000- \$299,999	13	7	30	43	26	39
\$300,000- \$349,999	8	11	58	56	57	57
\$350,000- \$399,999	3	1	102	32	17	49
\$400,000- \$449,999	1	--	--	10	2	39
\$450,000- \$499,999	1	1	16	11	8	73
\$500,000- \$549,999	--	--	--	3	3	173
\$550,000- \$599,999	--	--	--	2	1	106
\$600,000- \$699,999	2	--	--	6	--	--
\$700,000- \$799,999	--	--	--	--	--	--
\$800,000- \$899,999	1	--	--	2	--	--
\$900,000- \$999,999	--	--	--	--	--	--
\$1M - \$1.99M	--	--	--	2	--	--
\$2M - \$2.99M	--	--	--	--	--	--
\$3M+	--	--	--	--	--	--
Totals	32	21	47	173	119	54

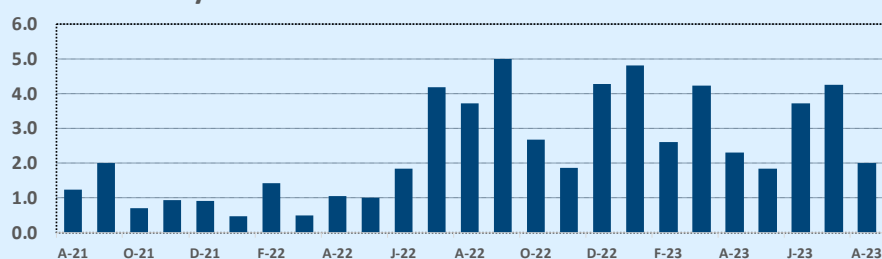
Average	This Month			Year-to-Date		
	Aug 2023	Aug 2022	Change	2023	2022	Change
List Price	\$311,085	\$376,905	-17.5%	\$342,863	\$379,004	-9.5%
List Price/SqFt	\$187	\$238	-21.5%	\$200	\$224	-10.8%
Sold Price	\$309,042	\$375,267	-17.6%	\$333,000	\$386,554	-13.9%
Sold Price/SqFt	\$185	\$237	-22.0%	\$194	\$229	-15.3%
Sold Price / Orig LP	94.9%	96.7%	-1.9%	93.1%	102.2%	-8.9%
Days on Market	47	27	+76.5%	54	21	+162.9%

Median	This Month			Year-to-Date		
	Aug 2023	Aug 2022	Change	2023	2022	Change
List Price	\$299,900	\$370,000	-18.9%	\$329,000	\$384,900	-14.5%
List Price/SqFt	\$195	\$234	-16.7%	\$195	\$222	-12.2%
Sold Price	\$300,000	\$370,000	-18.9%	\$327,033	\$387,000	-15.5%
Sold Price/SqFt	\$186	\$237	-21.3%	\$191	\$225	-15.3%
Sold Price / Orig LP	94.0%	96.5%	-2.6%	95.0%	100.0%	-5.0%
Days on Market	24	13	+84.6%	32	10	+220.0%

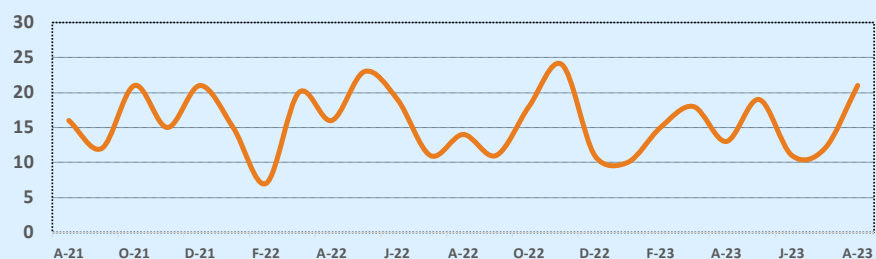
Average & Median Sales Price - Last Two Years



Months of Inventory - Last Two Years



Number of Sales - Last Two Years



Based on information from the Austin Board of REALTORS® (alternatively, from ACTRIS). Neither the Board nor ACTRIS guarantees or is in any way responsible for its accuracy. The Austin Board of REALTORS®, ACTRIS and their affiliates provide the MLS and all content therein "AS IS" and without any warranty, express or implied. Data maintained by the Board or ACTRIS may not reflect all real estate activity in the market.