

Postal Code 78621

Residential Statistics



August 2023

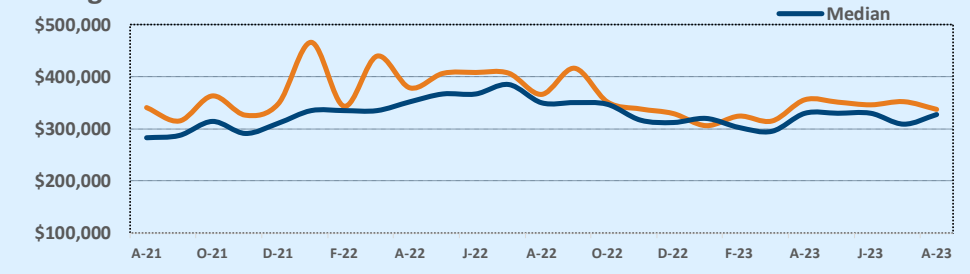
Listings	This Month			Year-to-Date		
	Aug 2023	Aug 2022	Change	2023	2022	Change
Single Family Sales	46	33	+39.4%	347	300	+15.7%
Condo/TH Sales	2	--	--	2	2	--
Total Sales	48	33	+45.5%	349	302	+15.6%
New Homes Only	18	5	+260.0%	112	92	+21.7%
Resale Only	30	28	+7.1%	237	210	+12.9%
Sales Volume	\$16,194,441	\$12,080,589	+34.1%	\$117,476,324	\$122,091,275	-3.8%
New Listings	66	60	+10.0%	575	507	+13.4%
Pending	29	N/A	N/A	47	N/A	N/A
Withdrawn	16	--	--	72	--	--
Expired	12	--	--	83	--	--
Months of Inventory	2.5	3.7	-31.8%	N/A	N/A	--

Price Range	This Month			Year-to-Date		
	New	Sales	DOM	New	Sales	DOM
\$149,999 or under	--	--	--	--	2	72
\$150,000- \$199,999	--	2	28	3	7	31
\$200,000- \$249,999	5	4	16	32	26	31
\$250,000- \$299,999	19	11	36	109	103	46
\$300,000- \$349,999	18	15	65	190	115	59
\$350,000- \$399,999	17	11	92	134	46	55
\$400,000- \$449,999	2	3	89	21	22	59
\$450,000- \$499,999	2	--	--	20	8	35
\$500,000- \$549,999	--	--	--	6	1	7
\$550,000- \$599,999	--	--	--	10	8	33
\$600,000- \$699,999	1	--	--	11	2	13
\$700,000- \$799,999	--	--	--	10	3	41
\$800,000- \$899,999	1	2	100	10	5	94
\$900,000- \$999,999	1	--	--	4	1	217
\$1M - \$1.99M	--	--	--	12	--	--
\$2M - \$2.99M	--	--	--	3	--	--
\$3M+	--	--	--	--	--	--
Totals	66	48	62	575	349	52

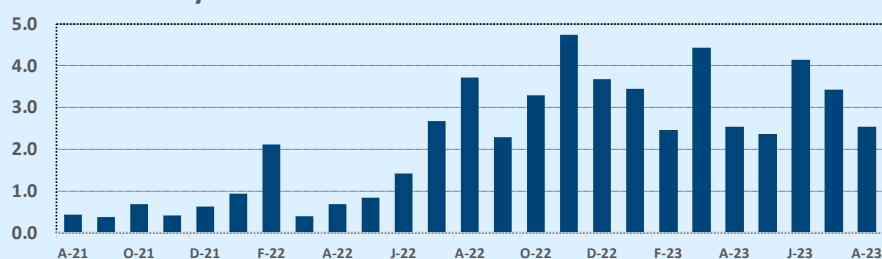
Average	This Month			Year-to-Date		
	Aug 2023	Aug 2022	Change	2023	2022	Change
List Price	\$343,819	\$366,608	-6.2%	\$343,902	\$396,675	-13.3%
List Price/SqFt	\$212	\$226	-6.3%	\$205	\$221	-7.0%
Sold Price	\$337,384	\$366,078	-7.8%	\$336,608	\$404,276	-16.7%
Sold Price/SqFt	\$208	\$226	-8.0%	\$201	\$225	-10.7%
Sold Price / Orig LP	95.4%	97.2%	-1.8%	95.2%	102.3%	-6.9%
Days on Market	62	21	+197.9%	52	15	+238.0%

Median	This Month			Year-to-Date		
	Aug 2023	Aug 2022	Change	2023	2022	Change
List Price	\$328,445	\$354,900	-7.5%	\$319,990	\$356,450	-10.2%
List Price/SqFt	\$204	\$225	-9.4%	\$197	\$208	-5.4%
Sold Price	\$327,460	\$350,000	-6.4%	\$315,000	\$361,900	-13.0%
Sold Price/SqFt	\$203	\$225	-9.8%	\$193	\$213	-9.4%
Sold Price / Orig LP	97.5%	100.0%	-2.5%	98.0%	100.0%	-2.0%
Days on Market	44	10	+340.0%	26	5	+420.0%

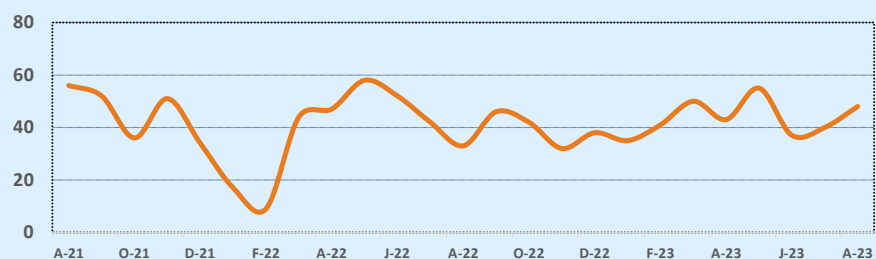
Average & Median Sales Price - Last Two Years



Months of Inventory - Last Two Years



Number of Sales - Last Two Years



Based on information from the Austin Board of REALTORS® (alternatively, from ACTRIS). Neither the Board nor ACTRIS guarantees or is in any way responsible for its accuracy. The Austin Board of REALTORS®, ACTRIS and their affiliates provide the MLS and all content therein "AS IS" and without any warranty, express or implied. Data maintained by the Board or ACTRIS may not reflect all real estate activity in the market.