

Postal Code 78759

Residential Statistics



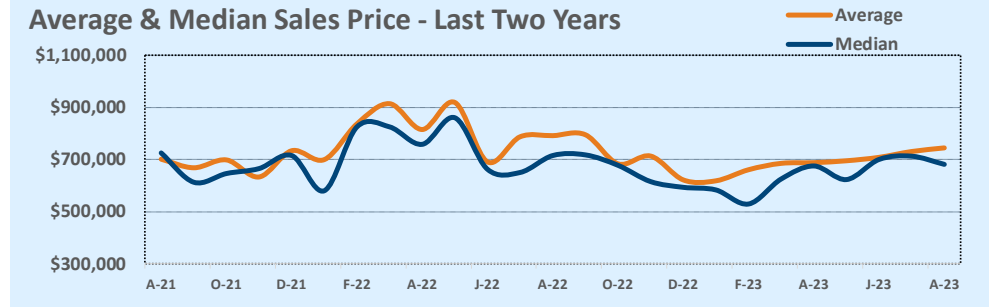
August 2023

Listings	This Month			Year-to-Date		
	Aug 2023	Aug 2022	Change	2023	2022	Change
Single Family Sales	24	22	+9.1%	169	186	-9.1%
Condo/TH Sales	9	12	-25.0%	64	87	-26.4%
Total Sales	33	34	-2.9%	233	273	-14.7%
New Homes Only	--	--	--	--	--	--
Resale Only	33	34	-2.9%	233	273	-14.7%
Sales Volume	\$24,564,538	\$26,904,501	-8.7%	\$162,543,501	\$223,669,596	-27.3%
New Listings	34	46	-26.1%	347	425	-18.4%
Pending	18	N/A	N/A	21	N/A	N/A
Withdrawn	9	--	--	28	--	--
Expired	4	--	--	13	--	--
Months of Inventory	2.5	2.6	-3.9%	N/A	N/A	--

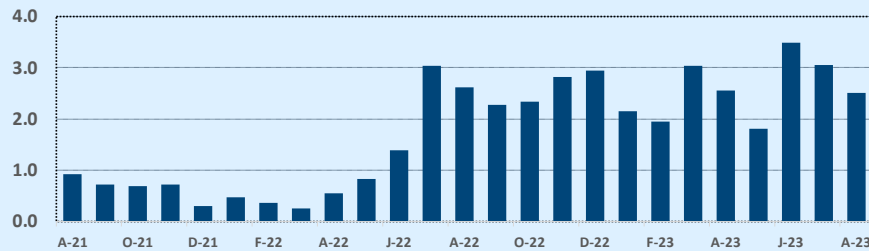
Price Range	This Month			Year-to-Date		
	New	Sales	DOM	New	Sales	DOM
\$149,999 or under	--	--	--	--	--	--
\$150,000- \$199,999	1	--	--	2	--	--
\$200,000- \$249,999	--	1	35	9	6	12
\$250,000- \$299,999	1	--	--	7	4	74
\$300,000- \$349,999	2	3	66	25	11	50
\$350,000- \$399,999	1	1	5	16	8	36
\$400,000- \$449,999	--	--	--	12	14	29
\$450,000- \$499,999	--	1	114	17	17	46
\$500,000- \$549,999	1	2	86	23	22	70
\$550,000- \$599,999	1	2	37	23	20	24
\$600,000- \$699,999	10	7	18	42	28	34
\$700,000- \$799,999	5	1	58	41	26	30
\$800,000- \$899,999	5	6	73	43	25	42
\$900,000- \$999,999	3	2	60	26	15	31
\$1M - \$1.99M	4	7	48	59	37	30
\$2M - \$2.99M	--	--	--	--	--	--
\$3M+	--	--	--	2	--	--
Totals	34	33	51	347	233	38

Average	This Month			Year-to-Date		
	Aug 2023	Aug 2022	Change	2023	2022	Change
List Price	\$773,370	\$831,206	-7.0%	\$717,982	\$783,319	-8.3%
List Price/SqFt	\$357	\$385	-7.3%	\$357	\$388	-8.1%
Sold Price	\$744,380	\$791,309	-5.9%	\$697,612	\$819,303	-14.9%
Sold Price/SqFt	\$345	\$370	-6.8%	\$348	\$409	-14.7%
Sold Price / Orig LP	92.8%	92.9%	-0.1%	94.5%	104.2%	-9.4%
Days on Market	51	22	+131.6%	38	13	+191.2%

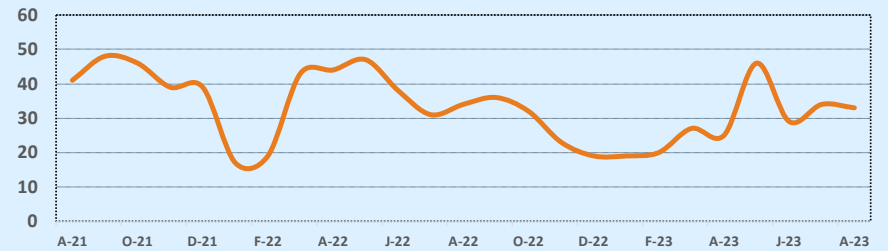
Median	This Month			Year-to-Date		
	Aug 2023	Aug 2022	Change	2023	2022	Change
List Price	\$699,000	\$762,500	-8.3%	\$650,000	\$749,900	-13.3%
List Price/SqFt	\$351	\$385	-8.7%	\$353	\$382	-7.8%
Sold Price	\$681,150	\$715,000	-4.7%	\$630,000	\$765,000	-17.6%
Sold Price/SqFt	\$348	\$367	-5.2%	\$346	\$401	-13.7%
Sold Price / Orig LP	94.0%	96.0%	-2.1%	96.0%	103.0%	-6.8%
Days on Market	39	19	+110.8%	19	6	+216.7%



Months of Inventory - Last Two Years



Number of Sales - Last Two Years



Based on information from the Austin Board of REALTORS® (alternatively, from ACTRIS). Neither the Board nor ACTRIS guarantees or is in any way responsible for its accuracy. The Austin Board of REALTORS®, ACTRIS and their affiliates provide the MLS and all content therein "AS IS" and without any warranty, express or implied. Data maintained by the Board or ACTRIS may not reflect all real estate activity in the market.