

MLS Area 10S

Residential Statistics



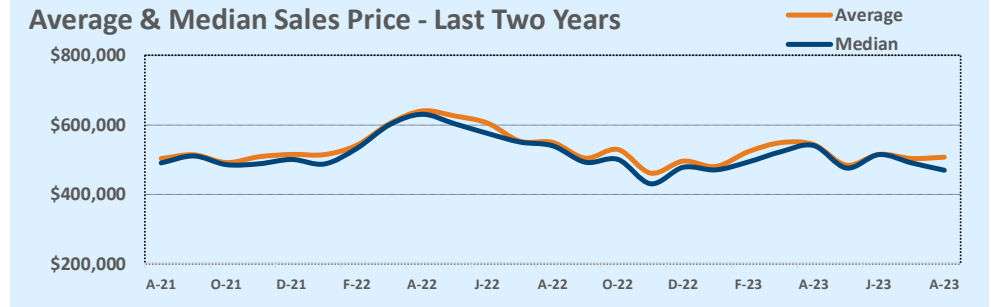
August 2023

Listings	This Month			Year-to-Date		
	Aug 2023	Aug 2022	Change	2023	2022	Change
Single Family Sales	56	62	-9.7%	364	490	-25.7%
Condo/TH Sales	1	6	-83.3%	27	54	-50.0%
Total Sales	57	68	-16.2%	391	544	-28.1%
New Homes Only	3	--	--	9	3	+200.0%
Resale Only	54	68	-20.6%	382	541	-29.4%
Sales Volume	\$28,875,250	\$37,332,425	-22.7%	\$200,995,046	\$317,507,761	-36.7%
New Listings	74	103	-28.2%	584	752	-22.3%
Pending	31	N/A	N/A	44	N/A	N/A
Withdrawn	18	--	--	45	--	--
Expired	7	--	--	39	--	--
Months of Inventory	2.1	2.5	-17.5%	N/A	N/A	--

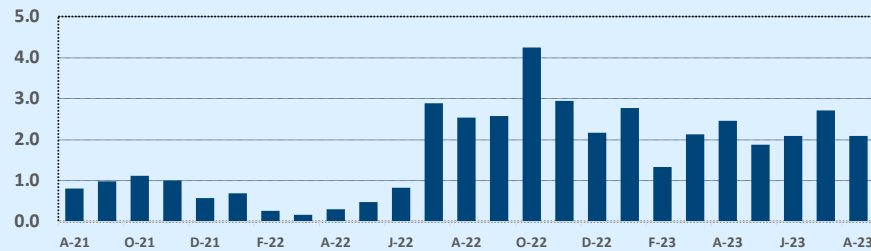
Price Range	This Month			Year-to-Date		
	New	Sales	DOM	New	Sales	DOM
\$149,999 or under	--	--	--	--	--	--
\$150,000- \$199,999	--	--	--	--	--	--
\$200,000- \$249,999	--	--	--	--	--	--
\$250,000- \$299,999	3	3	22	9	7	30
\$300,000- \$349,999	3	--	--	14	12	24
\$350,000- \$399,999	8	5	30	62	45	32
\$400,000- \$449,999	8	16	68	80	72	59
\$450,000- \$499,999	16	11	29	125	72	38
\$500,000- \$549,999	12	5	12	93	55	35
\$550,000- \$599,999	12	6	35	70	42	35
\$600,000- \$699,999	7	6	29	83	54	39
\$700,000- \$799,999	3	3	17	29	17	31
\$800,000- \$899,999	2	--	--	11	8	21
\$900,000- \$999,999	--	1	56	5	3	22
\$1M - \$1.99M	--	1	125	3	4	60
\$2M - \$2.99M	--	--	--	--	--	--
\$3M+	--	--	--	--	--	--
Totals	74	57	40	584	391	39

Average	This Month			Year-to-Date		
	Aug 2023	Aug 2022	Change	2023	2022	Change
List Price	\$519,361	\$559,069	-7.1%	\$523,579	\$557,377	-6.1%
List Price/SqFt	\$316	\$359	-11.9%	\$326	\$358	-8.9%
Sold Price	\$506,583	\$549,006	-7.7%	\$514,054	\$583,654	-11.9%
Sold Price/SqFt	\$308	\$352	-12.6%	\$320	\$375	-14.7%
Sold Price / Orig LP	93.7%	95.4%	-1.8%	94.7%	104.2%	-9.1%
Days on Market	40	21	+92.4%	39	15	+155.3%

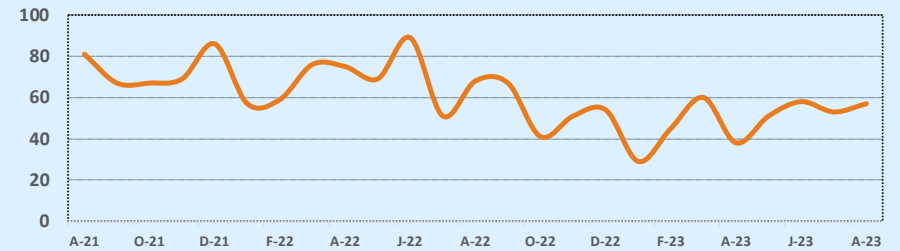
Median	This Month			Year-to-Date		
	Aug 2023	Aug 2022	Change	2023	2022	Change
List Price	\$475,000	\$554,500	-14.3%	\$499,900	\$550,000	-9.1%
List Price/SqFt	\$302	\$360	-16.1%	\$314	\$345	-9.0%
Sold Price	\$469,000	\$539,250	-13.0%	\$493,000	\$577,098	-14.6%
Sold Price/SqFt	\$297	\$347	-14.5%	\$308	\$369	-16.5%
Sold Price / Orig LP	95.0%	97.0%	-2.1%	96.0%	102.0%	-5.9%
Days on Market	24	16	+50.0%	20	6	+233.3%



Months of Inventory - Last Two Years



Number of Sales - Last Two Years



Based on information from the Austin Board of REALTORS® (alternatively, from ACTRIS). Neither the Board nor ACTRIS guarantees or is in any way responsible for its accuracy. The Austin Board of REALTORS®, ACTRIS and their affiliates provide the MLS and all content therein "AS IS" and without any warranty, express or implied. Data maintained by the Board or ACTRIS may not reflect all real estate activity in the market.