

MLS Area SWE

Residential Statistics



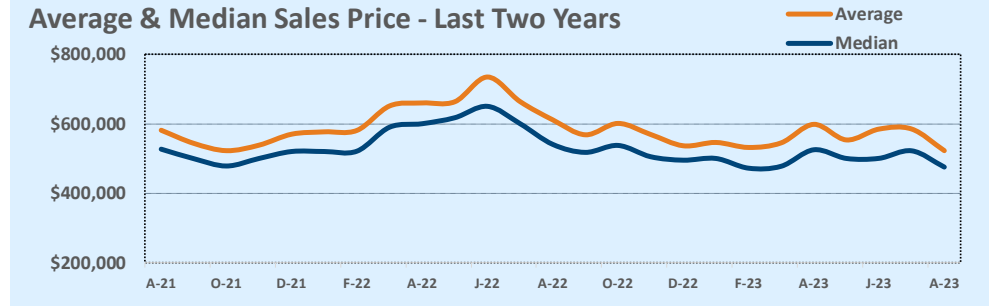
August 2023

Listings	This Month			Year-to-Date		
	Aug 2023	Aug 2022	Change	2023	2022	Change
Single Family Sales	47	62	-24.2%	401	509	-21.2%
Condo/TH Sales	4	2	+100.0%	15	39	-61.5%
Total Sales	51	64	-20.3%	416	548	-24.1%
New Homes Only	2	8	-75.0%	30	43	-30.2%
Resale Only	49	56	-12.5%	386	505	-23.6%
Sales Volume	\$26,643,808	\$39,111,184	-31.9%	\$233,053,680	\$355,189,359	-34.4%
New Listings	43	72	-40.3%	555	721	-23.0%
Pending	28	N/A	N/A	46	N/A	N/A
Withdrawn	22	--	--	68	--	--
Expired	3	--	--	26	--	--
Months of Inventory	1.8	2.4	-25.5%	N/A	N/A	--

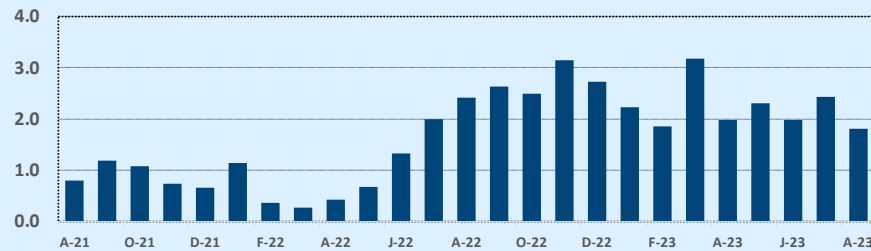
Price Range	This Month			Year-to-Date		
	New	Sales	DOM	New	Sales	DOM
\$149,999 or under	--	--	--	--	--	--
\$150,000- \$199,999	--	--	--	--	--	--
\$200,000- \$249,999	--	--	--	--	--	--
\$250,000- \$299,999	--	--	--	--	--	--
\$300,000- \$349,999	2	1	13	5	3	17
\$350,000- \$399,999	6	6	58	45	39	49
\$400,000- \$449,999	8	14	53	85	86	46
\$450,000- \$499,999	6	6	56	94	80	48
\$500,000- \$549,999	5	10	69	75	57	53
\$550,000- \$599,999	2	5	84	69	33	42
\$600,000- \$699,999	6	2	9	70	45	40
\$700,000- \$799,999	4	4	35	38	29	39
\$800,000- \$899,999	2	1	40	27	16	24
\$900,000- \$999,999	--	1	90	21	12	15
\$1M - \$1.99M	2	1	45	23	15	34
\$2M - \$2.99M	--	--	--	2	1	56
\$3M+	--	--	--	1	--	--
Totals	43	51	56	555	416	44

Average	This Month			Year-to-Date		
	Aug 2023	Aug 2022	Change	2023	2022	Change
List Price	\$534,123	\$617,786	-13.5%	\$570,772	\$625,201	-8.7%
List Price/SqFt	\$263	\$297	-11.6%	\$264	\$290	-9.0%
Sold Price	\$522,428	\$611,112	-14.5%	\$560,225	\$648,156	-13.6%
Sold Price/SqFt	\$257	\$293	-12.4%	\$259	\$300	-13.9%
Sold Price / Orig LP	93.1%	94.0%	-0.9%	94.9%	102.7%	-7.6%
Days on Market	56	26	+119.8%	44	18	+136.7%

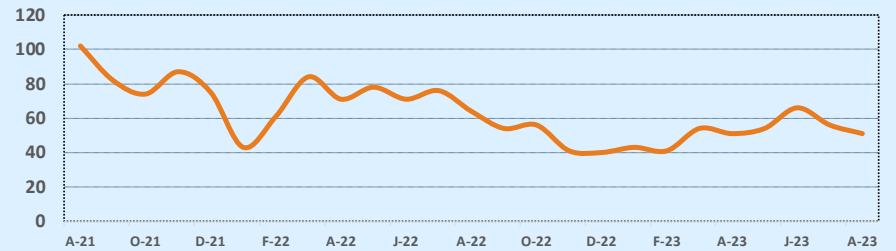
Median	This Month			Year-to-Date		
	Aug 2023	Aug 2022	Change	2023	2022	Change
List Price	\$485,000	\$549,045	-11.7%	\$509,495	\$568,238	-10.3%
List Price/SqFt	\$259	\$286	-9.5%	\$260	\$286	-8.8%
Sold Price	\$475,200	\$540,495	-12.1%	\$500,000	\$585,624	-14.6%
Sold Price/SqFt	\$256	\$282	-9.2%	\$252	\$295	-14.5%
Sold Price / Orig LP	94.0%	96.0%	-2.1%	96.0%	101.0%	-5.0%
Days on Market	49	20	+145.0%	23	7	+228.6%



Months of Inventory - Last Two Years



Number of Sales - Last Two Years



Based on information from the Austin Board of REALTORS® (alternatively, from ACTRIS). Neither the Board nor ACTRIS guarantees or is in any way responsible for its accuracy. The Austin Board of REALTORS®, ACTRIS and their affiliates provide the MLS and all content therein "AS IS" and without any warranty, express or implied. Data maintained by the Board or ACTRIS may not reflect all real estate activity in the market.