

Postal Code 78628

Residential Statistics



July 2023

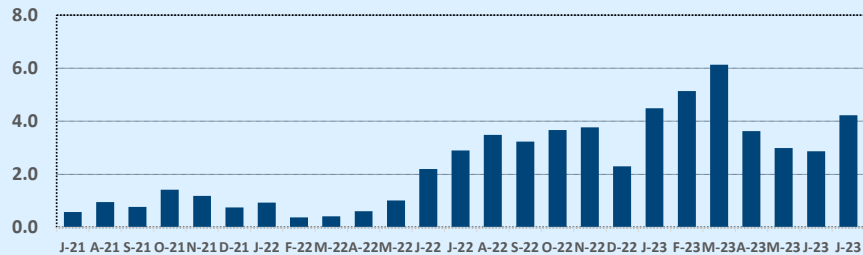
Listings	This Month			Year-to-Date		
	Jul 2023	Jul 2022	Change	2023	2022	Change
Single Family Sales	97	118	-17.8%	751	701	+7.1%
Condo/TH Sales	1	3	-66.7%	14	33	-57.6%
Total Sales	98	121	-19.0%	765	734	+4.2%
New Homes Only	26	32	-18.8%	180	124	+45.2%
Resale Only	72	89	-19.1%	585	610	-4.1%
Sales Volume	\$57,418,700	\$70,311,640	-18.3%	\$441,577,895	\$460,049,379	-4.0%
New Listings	135	204	-33.8%	997	1,233	-19.1%
Pending	83	N/A	N/A	135	N/A	N/A
Withdrawn	22	20	+10.0%	122	62	+96.8%
Expired	4	--	--	44	--	--
Months of Inventory	4.2	2.9	+45.6%	N/A	N/A	--

Average	This Month			Year-to-Date		
	Jul 2023	Jul 2022	Change	2023	2022	Change
List Price	\$607,146	\$575,349	+5.5%	\$597,535	\$609,177	-1.9%
List Price/SqFt	\$236	\$252	-6.5%	\$236	\$248	-4.6%
Sold Price	\$585,905	\$581,088	+0.8%	\$577,226	\$626,770	-7.9%
Sold Price/SqFt	\$229	\$255	-10.2%	\$229	\$256	-10.3%
Sold Price / Orig LP	97.3%	101.2%	-3.8%	97.1%	103.3%	-6.1%
Days on Market	86	17	+399.9%	82	22	+281.7%

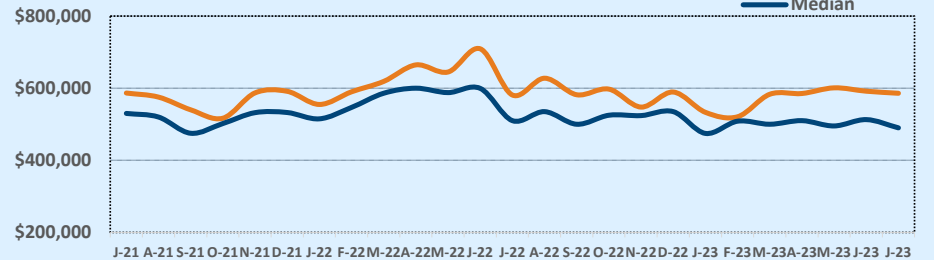
Median	This Month			Year-to-Date		
	Jul 2023	Jul 2022	Change	2023	2022	Change
List Price	\$502,475	\$500,000	+0.5%	\$517,400	\$539,450	-4.1%
List Price/SqFt	\$224	\$248	-9.6%	\$228	\$242	-5.7%
Sold Price	\$490,000	\$510,000	-3.9%	\$500,000	\$559,000	-10.6%
Sold Price/SqFt	\$221	\$250	-11.8%	\$222	\$252	-11.9%
Sold Price / Orig LP	98.1%	100.0%	-1.9%	97.7%	100.9%	-3.2%
Days on Market	43	8	+431.3%	49	7	+600.0%

Price Range	This Month			Year-to-Date		
	New	Sales	DOM	New	Sales	DOM
\$149,999 or under	--	--	--	1	--	--
\$150,000- \$199,999	--	--	--	--	1	6
\$200,000- \$249,999	1	--	--	4	1	44
\$250,000- \$299,999	--	--	--	6	1	173
\$300,000- \$349,999	2	6	10	37	43	40
\$350,000- \$399,999	13	16	65	110	106	69
\$400,000- \$449,999	15	13	89	121	112	91
\$450,000- \$499,999	10	16	55	110	114	91
\$500,000- \$549,999	10	5	99	101	71	86
\$550,000- \$599,999	11	12	102	80	72	100
\$600,000- \$699,999	38	12	131	187	108	104
\$700,000- \$799,999	12	8	110	82	55	76
\$800,000- \$899,999	6	4	101	41	32	64
\$900,000- \$999,999	3	2	118	31	11	65
\$1M - \$1.99M	11	3	118	76	34	48
\$2M - \$2.99M	3	--	--	10	3	19
\$3M+	--	1	116	--	1	116
Totals	135	98	86	997	765	82

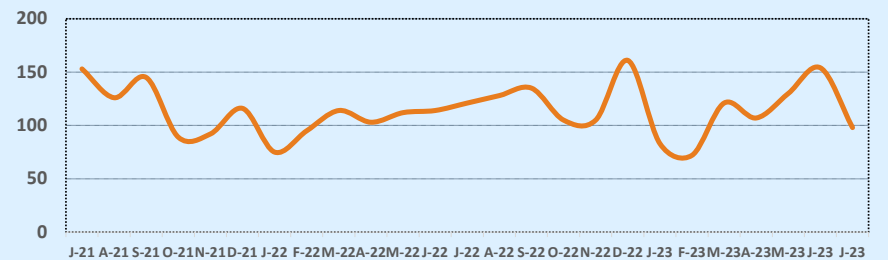
Months of Inventory - Last Two Years



Average & Median Sales Price - Last Two Years



Number of Sales - Last Two Years



Based on information from the Austin Board of REALTORS® (alternatively, from ACTRIS). Neither the Board nor ACTRIS guarantees or is in any way responsible for its accuracy. The Austin Board of REALTORS®, ACTRIS and their affiliates provide the MLS and all content therein "AS IS" and without any warranty, express or implied. Data maintained by the Board or ACTRIS may not reflect all real estate activity in the market.