

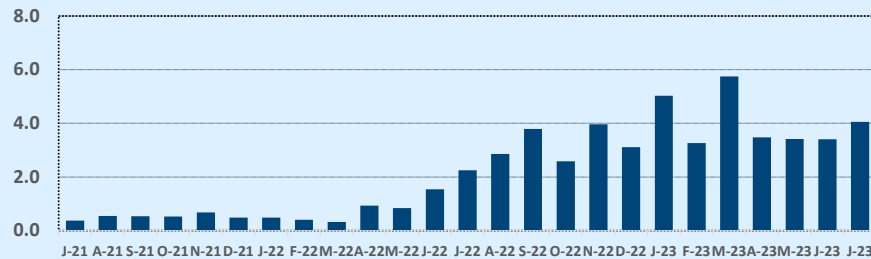
Listings	This Month			Year-to-Date		
	Jul 2023	Jul 2022	Change	2023	2022	Change
Single Family Sales	71	75	-5.3%	473	508	-6.9%
Condo/TH Sales	1	--	--	2	--	--
<b>Total Sales</b>	<b>72</b>	<b>75</b>	<b>-4.0%</b>	<b>475</b>	<b>508</b>	<b>-6.5%</b>
New Homes Only	3	2	+50.0%	37	14	+164.3%
Resale Only	69	73	-5.5%	438	494	-11.3%
Sales Volume	\$39,219,213	\$43,859,539	-10.6%	\$249,735,780	\$298,784,197	-16.4%
New Listings	73	123	-40.7%	686	741	-7.4%
Pending	54	N/A	N/A	73	N/A	N/A
Withdrawn	12	7	+71.4%	75	26	+188.5%
Expired	--	--	--	30	--	--
Months of Inventory	4.1	2.3	+80.0%	N/A	N/A	--

Average	This Month			Year-to-Date		
	Jul 2023	Jul 2022	Change	2023	2022	Change
List Price	\$558,803	\$589,293	-5.2%	\$539,781	\$571,475	-5.5%
List Price/SqFt	\$248	\$268	-7.6%	\$248	\$261	-4.8%
Sold Price	\$544,711	\$584,794	-6.9%	\$525,760	\$588,158	-10.6%
Sold Price/SqFt	\$241	\$267	-9.6%	\$242	\$269	-10.0%
Sold Price / Orig LP	97.4%	99.7%	-2.2%	97.6%	103.1%	-5.3%
Days on Market	69	17	+293.7%	71	13	+433.8%

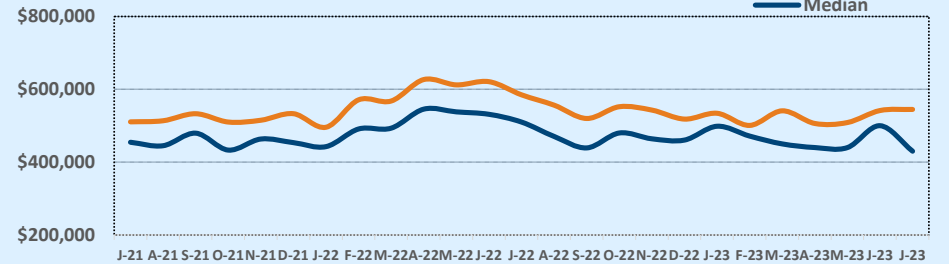
Median	This Month			Year-to-Date		
	Jul 2023	Jul 2022	Change	2023	2022	Change
List Price	\$449,995	\$525,000	-14.3%	\$469,900	\$499,990	-6.0%
List Price/SqFt	\$240	\$263	-8.4%	\$242	\$255	-5.2%
Sold Price	\$430,000	\$510,000	-15.7%	\$455,000	\$515,000	-11.7%
Sold Price/SqFt	\$236	\$262	-9.6%	\$235	\$264	-11.0%
Sold Price / Orig LP	98.1%	100.0%	-1.9%	97.9%	101.3%	-3.3%
Days on Market	45	10	+350.0%	43	5	+760.0%

Price Range	This Month			Year-to-Date		
	New	Sales	DOM	New	Sales	DOM
\$149,999 or under	--	--	--	--	--	--
\$150,000- \$199,999	--	--	--	--	--	--
\$200,000- \$249,999	--	--	--	--	--	--
\$250,000- \$299,999	2	4	103	21	14	90
\$300,000- \$349,999	8	7	91	62	51	79
\$350,000- \$399,999	7	14	49	114	90	64
\$400,000- \$449,999	10	16	64	87	70	71
\$450,000- \$499,999	15	4	39	97	58	96
\$500,000- \$549,999	3	5	69	57	44	81
\$550,000- \$599,999	7	3	227	51	31	89
\$600,000- \$699,999	9	7	98	54	41	64
\$700,000- \$799,999	2	3	26	49	31	34
\$800,000- \$899,999	5	1	--	36	14	42
\$900,000- \$999,999	1	1	5	19	9	36
\$1M - \$1.99M	4	7	33	38	22	49
\$2M - \$2.99M	--	--	--	1	--	--
\$3M+	--	--	--	--	--	--
<b>Totals</b>	<b>73</b>	<b>72</b>	<b>69</b>	<b>686</b>	<b>475</b>	<b>71</b>

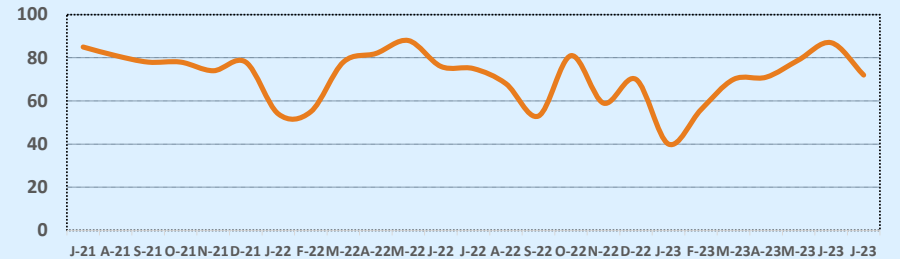
Months of Inventory - Last Two Years



Average & Median Sales Price - Last Two Years



Number of Sales - Last Two Years



Based on information from the Austin Board of REALTORS® (alternatively, from ACTRIS). Neither the Board nor ACTRIS guarantees or is in any way responsible for its accuracy. The Austin Board of REALTORS®, ACTRIS and their affiliates provide the MLS and all content therein "AS IS" and without any warranty, express or implied. Data maintained by the Board or ACTRIS may not reflect all real estate activity in the market.