

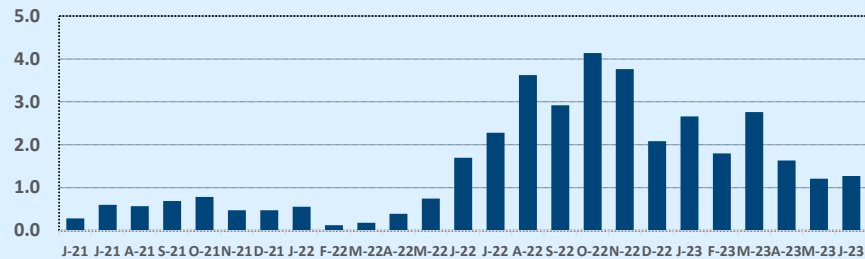
Listings	This Month			Year-to-Date		
	Jun 2023	Jun 2022	Change	2023	2022	Change
Single Family Sales	83	92	-9.8%	369	545	-32.3%
Condo/TH Sales	8	4	+100.0%	28	35	-20.0%
Total Sales	91	96	-5.2%	397	580	-31.6%
New Homes Only	--	1	--	4	19	-78.9%
Resale Only	91	95	-4.2%	393	561	-29.9%
Sales Volume	\$53,101,863	\$64,159,893	-17.2%	\$225,858,401	\$386,318,093	-41.5%
New Listings	134	203	-34.0%	532	793	-32.9%
Pending	62	N/A	N/A	78	N/A	N/A
Withdrawn	11	21	-47.6%	53	35	+51.4%
Expired	3	--	--	23	--	--
Months of Inventory	1.3	1.7	-24.9%	N/A	N/A	--

Average	This Month			Year-to-Date		
	Jun 2023	Jun 2022	Change	2023	2022	Change
List Price	\$586,511	\$641,646	-8.6%	\$578,241	\$625,611	-7.6%
List Price/SqFt	\$245	\$280	-12.6%	\$237	\$264	-10.2%
Sold Price	\$583,537	\$668,332	-12.7%	\$568,913	\$666,066	-14.6%
Sold Price/SqFt	\$244	\$290	-15.8%	\$234	\$281	-16.8%
Sold Price / Orig LP	99.6%	103.5%	-3.7%	98.5%	106.5%	-7.6%
Days on Market	26	9	+187.6%	49	14	+243.2%

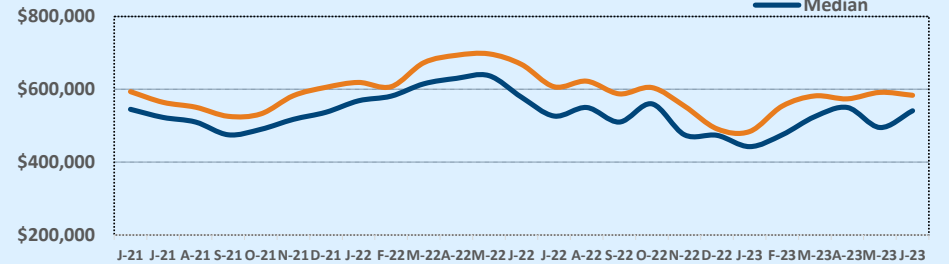
Median	This Month			Year-to-Date		
	Jun 2023	Jun 2022	Change	2023	2022	Change
List Price	\$545,000	\$575,000	-5.2%	\$515,000	\$575,000	-10.4%
List Price/SqFt	\$247	\$278	-11.3%	\$235	\$263	-10.7%
Sold Price	\$541,000	\$578,175	-6.4%	\$505,000	\$605,000	-16.5%
Sold Price/SqFt	\$244	\$291	-16.3%	\$231	\$281	-17.7%
Sold Price / Orig LP	99.9%	101.9%	-2.0%	98.8%	105.0%	-6.0%
Days on Market	9	6	+50.0%	17	5	+240.0%

Price Range	This Month			Year-to-Date		
	New	Sales	DOM	New	Sales	DOM
\$149,999 or under	--	--	--	--	--	--
\$150,000- \$199,999	1	--	--	1	--	--
\$200,000- \$249,999	--	--	--	1	2	58
\$250,000- \$299,999	--	--	--	2	4	96
\$300,000- \$349,999	1	3	27	12	17	52
\$350,000- \$399,999	18	18	27	80	69	58
\$400,000- \$449,999	19	10	23	60	59	51
\$450,000- \$499,999	18	7	43	74	42	64
\$500,000- \$549,999	11	10	42	48	37	59
\$550,000- \$599,999	15	13	40	60	35	36
\$600,000- \$699,999	20	13	7	65	58	54
\$700,000- \$799,999	5	3	8	40	23	24
\$800,000- \$899,999	12	5	18	38	18	23
\$900,000- \$999,999	6	4	9	15	10	30
\$1M - \$1.99M	7	5	10	33	23	19
\$2M - \$2.99M	1	--	--	2	--	--
\$3M+	--	--	--	1	--	--
Totals	134	91	26	532	397	49

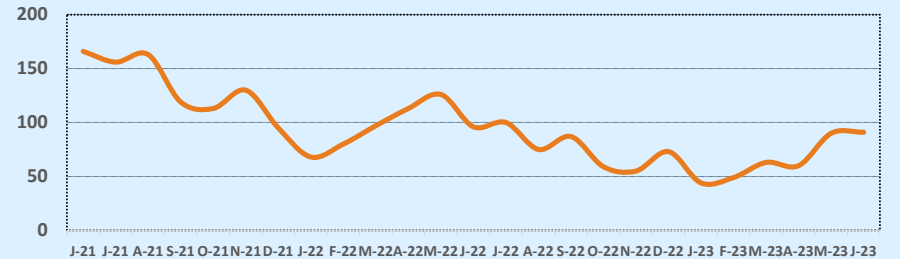
Months of Inventory - Last Two Years



Average & Median Sales Price - Last Two Years



Number of Sales - Last Two Years



Based on information from the Austin Board of REALTORS® (alternatively, from ACTRIS). Neither the Board nor ACTRIS guarantees or is in any way responsible for its accuracy. The Austin Board of REALTORS®, ACTRIS and their affiliates provide the MLS and all content therein "AS IS" and without any warranty, express or implied. Data maintained by the Board or ACTRIS may not reflect all real estate activity in the market.