

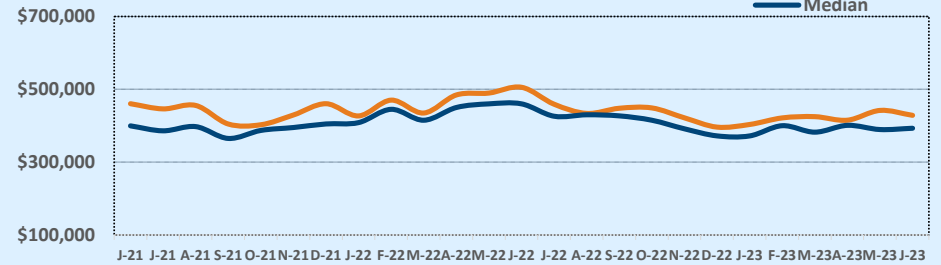
Listings	This Month			Year-to-Date		
	Jun 2023	Jun 2022	Change	2023	2022	Change
Single Family Sales	76	85	-10.6%	394	412	-4.4%
Condo/TH Sales	4	5	-20.0%	35	63	-44.4%
Total Sales	80	90	-11.1%	429	475	-9.7%
New Homes Only	6	26	-76.9%	57	87	-34.5%
Resale Only	74	64	+15.6%	372	388	-4.1%
Sales Volume	\$34,278,237	\$45,498,589	-24.7%	\$182,305,052	\$224,765,221	-18.9%
New Listings	107	139	-23.0%	452	634	-28.7%
Pending	51	N/A	N/A	62	N/A	N/A
Withdrawn	14	6	+133.3%	77	29	+165.5%
Expired	1	--	--	27	--	--
Months of Inventory	1.7	1.3	+28.3%	N/A	N/A	--

Average	This Month			Year-to-Date		
	Jun 2023	Jun 2022	Change	2023	2022	Change
List Price	\$437,901	\$495,783	-11.7%	\$438,563	\$458,364	-4.3%
List Price/SqFt	\$222	\$262	-15.2%	\$219	\$242	-9.5%
Sold Price	\$428,478	\$505,540	-15.2%	\$424,954	\$473,190	-10.2%
Sold Price/SqFt	\$218	\$266	-18.1%	\$212	\$249	-14.8%
Sold Price / Orig LP	98.1%	102.2%	-4.1%	97.1%	103.4%	-6.1%
Days on Market	76	14	+430.4%	73	16	+349.7%

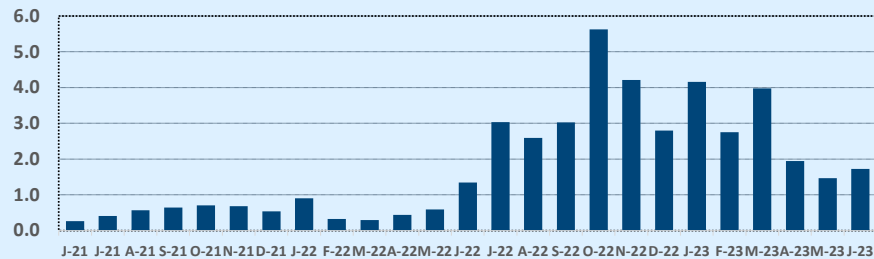
Median	This Month			Year-to-Date		
	Jun 2023	Jun 2022	Change	2023	2022	Change
List Price	\$400,615	\$450,000	-11.0%	\$400,000	\$426,519	-6.2%
List Price/SqFt	\$206	\$232	-10.9%	\$206	\$230	-10.4%
Sold Price	\$393,000	\$460,000	-14.6%	\$390,000	\$443,000	-12.0%
Sold Price/SqFt	\$205	\$237	-13.8%	\$202	\$236	-14.4%
Sold Price / Orig LP	99.0%	100.0%	-1.0%	98.1%	101.0%	-2.9%
Days on Market	43	6	+608.3%	47	5	+840.0%

Price Range	This Month			Year-to-Date		
	New	Sales	DOM	New	Sales	DOM
\$149,999 or under	--	--	--	--	--	--
\$150,000- \$199,999	1	1	3	1	2	20
\$200,000- \$249,999	1	--	--	3	1	5
\$250,000- \$299,999	4	8	27	21	28	35
\$300,000- \$349,999	15	12	102	59	80	83
\$350,000- \$399,999	28	23	82	115	126	73
\$400,000- \$449,999	20	16	67	96	89	72
\$450,000- \$499,999	10	8	129	42	41	78
\$500,000- \$549,999	5	1	31	38	14	32
\$550,000- \$599,999	5	4	90	13	14	116
\$600,000- \$699,999	7	4	54	24	15	90
\$700,000- \$799,999	6	--	--	15	7	97
\$800,000- \$899,999	2	2	9	8	2	9
\$900,000- \$999,999	--	--	--	2	3	85
\$1M - \$1.99M	2	1	10	13	7	73
\$2M - \$2.99M	1	--	--	2	--	--
\$3M+	--	--	--	--	--	--
Totals	107	80	76	452	429	73

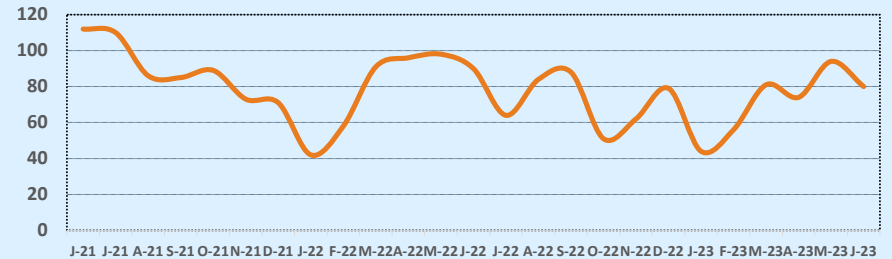
Average & Median Sales Price - Last Two Years



Months of Inventory - Last Two Years



Number of Sales - Last Two Years



Based on information from the Austin Board of REALTORS® (alternatively, from ACTRIS). Neither the Board nor ACTRIS guarantees or is in any way responsible for its accuracy. The Austin Board of REALTORS®, ACTRIS and their affiliates provide the MLS and all content therein "AS IS" and without any warranty, express or implied. Data maintained by the Board or ACTRIS may not reflect all real estate activity in the market.