

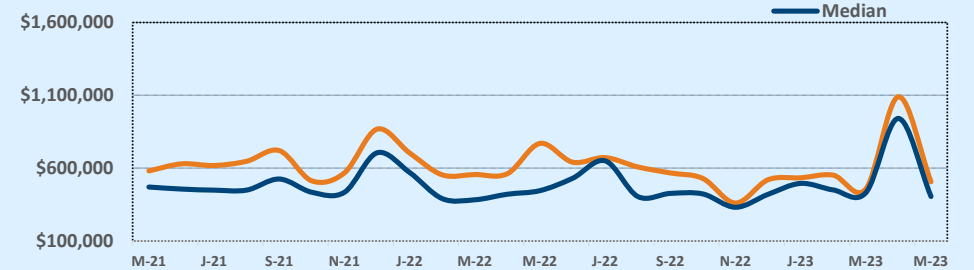
Listings	This Month			Year-to-Date		
	May 2023	May 2022	Change	2023	2022	Change
Single Family Sales	15	20	-25.0%	60	83	-27.7%
Condo/TH Sales	3	--	--	6	8	-25.0%
Total Sales	18	20	-10.0%	66	91	-27.5%
New Homes Only	3	2	+50.0%	11	10	+10.0%
Resale Only	15	18	-16.7%	55	81	-32.1%
Sales Volume	\$9,108,935	\$15,391,850	-40.8%	\$35,449,000	\$56,893,395	-37.7%
New Listings	26	32	-18.8%	133	122	+9.0%
Pending	13	N/A	N/A	23	N/A	N/A
Withdrawn	4	4	--	13	11	+18.2%
Expired	6	--	--	17	--	--
Months of Inventory	4.2	2.1	+106.0%	N/A	N/A	--

Average	This Month			Year-to-Date		
	May 2023	May 2022	Change	2023	2022	Change
List Price	\$511,474	\$795,959	-35.7%	\$547,951	\$639,968	-14.4%
List Price/SqFt	\$275	\$371	-25.8%	\$268	\$316	-15.0%
Sold Price	\$506,052	\$769,593	-34.2%	\$537,106	\$625,202	-14.1%
Sold Price/SqFt	\$272	\$367	-25.8%	\$262	\$312	-16.0%
Sold Price / Orig LP	97.2%	94.0%	+3.4%	96.5%	97.0%	-0.5%
Days on Market	56	25	+127.8%	81	30	+166.2%

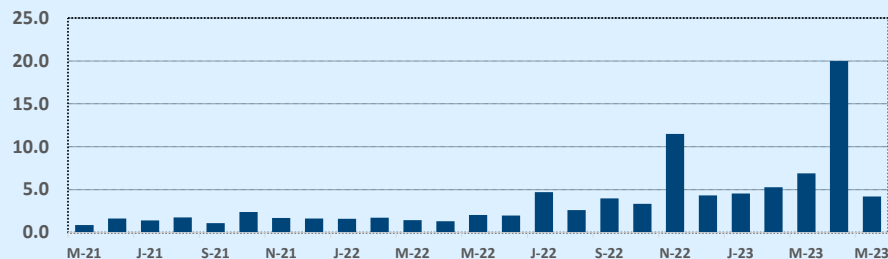
Median	This Month			Year-to-Date		
	May 2023	May 2022	Change	2023	2022	Change
List Price	\$417,000	\$462,450	-9.8%	\$449,890	\$459,900	-2.2%
List Price/SqFt	\$226	\$251	-10.1%	\$233	\$240	-3.2%
Sold Price	\$405,000	\$445,322	-9.1%	\$444,890	\$439,075	+1.3%
Sold Price/SqFt	\$226	\$255	-11.6%	\$224	\$243	-7.6%
Sold Price / Orig LP	97.0%	99.0%	-2.0%	96.9%	98.4%	-1.4%
Days on Market	21	13	+64.0%	61	16	+281.3%

Price Range	This Month			Year-to-Date		
	New	Sales	DOM	New	Sales	DOM
\$149,999 or under	--	1	10	1	2	121
\$150,000- \$199,999	--	1	24	2	1	24
\$200,000- \$249,999	--	4	18	4	6	33
\$250,000- \$299,999	--	1	17	8	4	68
\$300,000- \$349,999	3	1	210	9	5	147
\$350,000- \$399,999	8	1	68	23	7	80
\$400,000- \$449,999	3	1	75	15	9	82
\$450,000- \$499,999	--	2	118	6	8	110
\$500,000- \$549,999	--	--	--	4	5	50
\$550,000- \$599,999	1	--	--	1	2	108
\$600,000- \$699,999	3	1	--	12	3	89
\$700,000- \$799,999	1	2	47	7	3	108
\$800,000- \$899,999	--	1	13	3	3	6
\$900,000- \$999,999	1	--	--	6	2	124
\$1M - \$1.99M	4	2	98	25	5	68
\$2M - \$2.99M	1	--	--	3	1	3
\$3M+	1	--	--	4	--	--
Totals	26	18	56	133	66	81

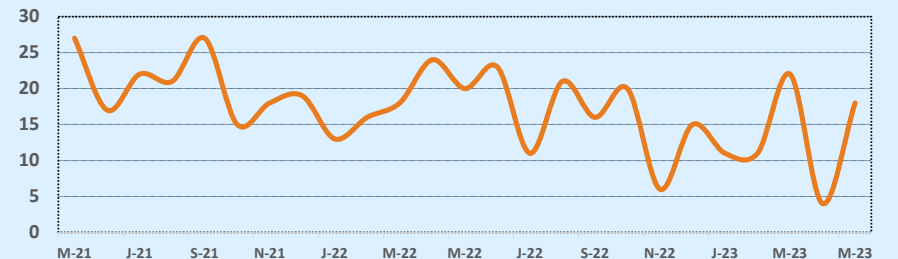
Average & Median Sales Price - Last Two Years



Months of Inventory - Last Two Years



Number of Sales - Last Two Years



Based on information from the Austin Board of REALTORS® (alternatively, from ACTRIS). Neither the Board nor ACTRIS guarantees or is in any way responsible for its accuracy. The Austin Board of REALTORS®, ACTRIS and their affiliates provide the MLS and all content therein "AS IS" and without any warranty, express or implied. Data maintained by the Board or ACTRIS may not reflect all real estate activity in the market.