

# MLS Area HS

# Residential Statistics



May 2023

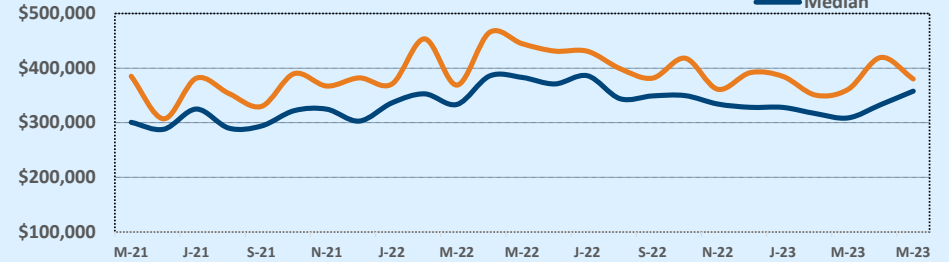
Listings	This Month			Year-to-Date		
	May 2023	May 2022	Change	2023	2022	Change
Single Family Sales	56	59	-5.1%	321	248	+29.4%
Condo/TH Sales	9	--	--	17	7	+142.9%
<b>Total Sales</b>	<b>65</b>	<b>59</b>	<b>+10.2%</b>	<b>338</b>	<b>255</b>	<b>+32.5%</b>
New Homes Only	23	7	+228.6%	153	28	+446.4%
Resale Only	42	52	-19.2%	185	227	-18.5%
Sales Volume	\$24,702,694	\$26,232,082	-5.8%	\$127,013,654	\$106,813,422	+18.9%
New Listings	81	105	-22.9%	309	431	-28.3%
Pending	40	N/A	N/A	64	N/A	N/A
Withdrawn	9	4	+125.0%	23	10	+130.0%
Expired	2	--	--	14	--	--
Months of Inventory	3.0	1.4	+118.5%	N/A	N/A	--

Price Range	This Month			Year-to-Date		
	New	Sales	DOM	New	Sales	DOM
\$149,999 or under	--	2	11	1	2	11
\$150,000- \$199,999	3	1	15	6	5	53
\$200,000- \$249,999	1	3	76	5	12	35
\$250,000- \$299,999	9	9	94	38	79	72
\$300,000- \$349,999	8	16	73	64	105	70
\$350,000- \$399,999	12	14	92	52	50	63
\$400,000- \$449,999	10	5	70	28	15	90
\$450,000- \$499,999	7	4	137	20	14	127
\$500,000- \$549,999	3	4	133	15	16	108
\$550,000- \$599,999	5	2	221	16	11	125
\$600,000- \$699,999	14	4	83	30	21	76
\$700,000- \$799,999	6	1	1	14	5	4
\$800,000- \$899,999	1	--	--	9	2	132
\$900,000- \$999,999	1	--	--	5	--	--
\$1M - \$1.99M	1	--	--	4	1	170
\$2M - \$2.99M	--	--	--	1	--	--
\$3M+	--	--	--	1	--	--
<b>Totals</b>	<b>81</b>	<b>65</b>	<b>89</b>	<b>309</b>	<b>338</b>	<b>74</b>

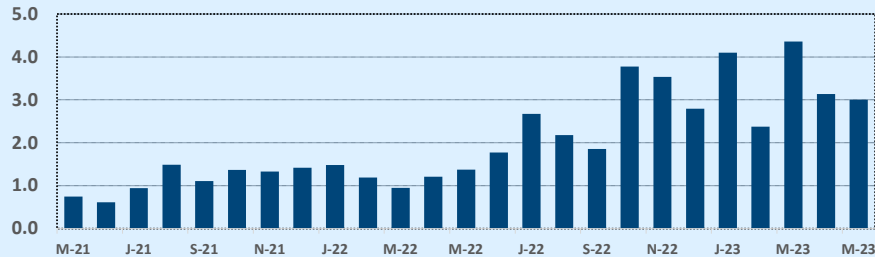
Average	This Month			Year-to-Date		
	May 2023	May 2022	Change	2023	2022	Change
List Price	\$386,939	\$432,355	-10.5%	\$387,500	\$407,760	-5.0%
List Price/SqFt	\$223	\$230	-3.1%	\$214	\$209	+2.3%
Sold Price	\$380,041	\$444,612	-14.5%	\$375,780	\$418,876	-10.3%
Sold Price/SqFt	\$219	\$238	-8.0%	\$207	\$214	-3.1%
Sold Price / Orig LP	98.2%	103.7%	-5.3%	97.1%	102.8%	-5.5%
Days on Market	89	24	+263.6%	74	23	+222.9%

Median	This Month			Year-to-Date		
	May 2023	May 2022	Change	2023	2022	Change
List Price	\$358,122	\$386,900	-7.4%	\$337,950	\$349,000	-3.2%
List Price/SqFt	\$220	\$207	+6.5%	\$205	\$198	+3.8%
Sold Price	\$357,800	\$382,880	-6.6%	\$326,000	\$351,900	-7.4%
Sold Price/SqFt	\$215	\$225	-4.3%	\$198	\$206	-3.5%
Sold Price / Orig LP	98.9%	100.6%	-1.7%	98.1%	100.2%	-2.0%
Days on Market	57	7	+714.3%	51	6	+741.7%

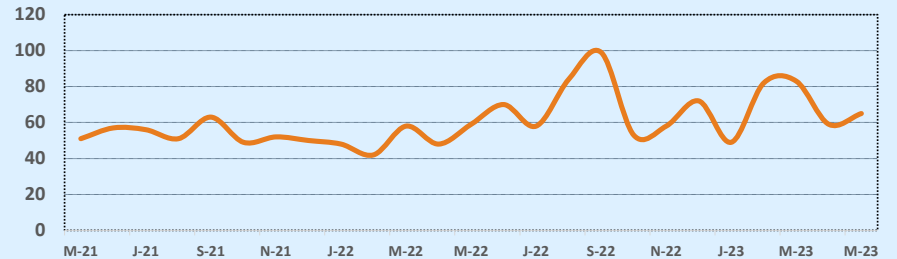
Average & Median Sales Price - Last Two Years



Months of Inventory - Last Two Years



Number of Sales - Last Two Years



Based on information from the Austin Board of REALTORS® (alternatively, from ACTRIS). Neither the Board nor ACTRIS guarantees or is in any way responsible for its accuracy. The Austin Board of REALTORS®, ACTRIS and their affiliates provide the MLS and all content therein "AS IS" and without any warranty, express or implied. Data maintained by the Board or ACTRIS may not reflect all real estate activity in the market.