

MLS Area PF

Residential Statistics



May 2023

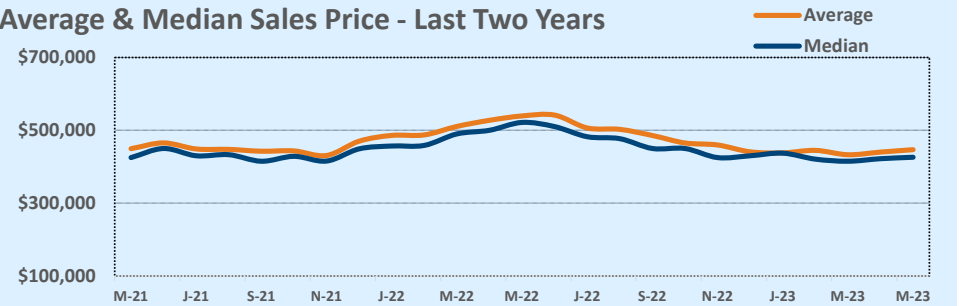
Listings	This Month			Year-to-Date		
	May 2023	May 2022	Change	2023	2022	Change
Single Family Sales	161	164	-1.8%	561	859	-34.7%
Condo/TH Sales	7	10	-30.0%	34	46	-26.1%
Total Sales	168	174	-3.4%	595	905	-34.3%
New Homes Only	11	6	+83.3%	30	60	-50.0%
Resale Only	157	168	-6.5%	565	845	-33.1%
Sales Volume	\$75,059,560	\$93,859,464	-20.0%	\$262,265,277	\$461,574,035	-43.2%
New Listings	200	251	-20.3%	809	956	-15.4%
Pending	127	N/A	N/A	182	N/A	N/A
Withdrawn	22	17	+29.4%	101	38	+165.8%
Expired	6	--	--	51	--	--
Months of Inventory	1.7	0.8	+104.3%	N/A	N/A	--

Price Range	This Month			Year-to-Date		
	New	Sales	DOM	New	Sales	DOM
\$149,999 or under	--	--	--	--	--	--
\$150,000- \$199,999	--	--	--	--	--	--
\$200,000- \$249,999	1	--	--	4	3	47
\$250,000- \$299,999	1	1	164	15	14	47
\$300,000- \$349,999	27	26	63	94	85	61
\$350,000- \$399,999	30	33	40	171	115	65
\$400,000- \$449,999	46	38	53	162	142	58
\$450,000- \$499,999	31	30	32	134	91	62
\$500,000- \$549,999	19	11	89	64	60	78
\$550,000- \$599,999	17	14	54	63	38	51
\$600,000- \$699,999	21	12	109	62	39	77
\$700,000- \$799,999	6	3	53	29	7	43
\$800,000- \$899,999	--	--	--	2	1	51
\$900,000- \$999,999	--	--	--	4	--	--
\$1M - \$1.99M	1	--	--	2	--	--
\$2M - \$2.99M	--	--	--	1	--	--
\$3M+	--	--	--	2	--	--
Totals	200	168	55	809	595	63

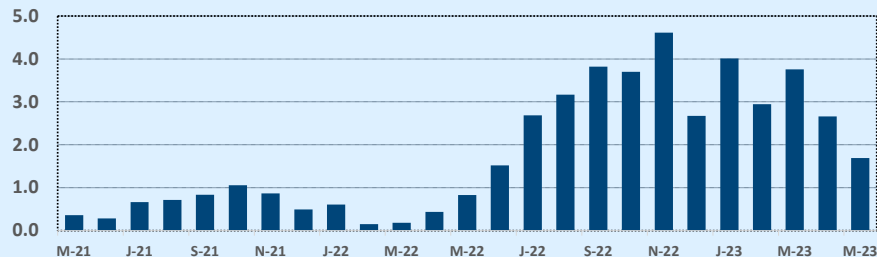
Average	This Month			Year-to-Date		
	May 2023	May 2022	Change	2023	2022	Change
List Price	\$456,540	\$506,941	-9.9%	\$451,601	\$486,729	-7.2%
List Price/SqFt	\$218	\$233	-6.5%	\$215	\$231	-7.0%
Sold Price	\$446,783	\$539,422	-17.2%	\$440,782	\$510,027	-13.6%
Sold Price/SqFt	\$214	\$249	-13.9%	\$210	\$242	-13.3%
Sold Price / Orig LP	98.1%	106.5%	-8.0%	97.7%	105.0%	-7.0%
Days on Market	55	10	+469.9%	63	17	+260.9%

Median	This Month			Year-to-Date		
	May 2023	May 2022	Change	2023	2022	Change
List Price	\$439,946	\$479,900	-8.3%	\$438,540	\$461,421	-5.0%
List Price/SqFt	\$221	\$232	-5.0%	\$215	\$228	-5.9%
Sold Price	\$425,945	\$521,612	-18.3%	\$422,000	\$481,000	-12.3%
Sold Price/SqFt	\$215	\$248	-13.2%	\$210	\$238	-11.9%
Sold Price / Orig LP	99.0%	105.2%	-5.8%	98.3%	102.5%	-4.1%
Days on Market	22	5	+330.0%	33	5	+560.0%

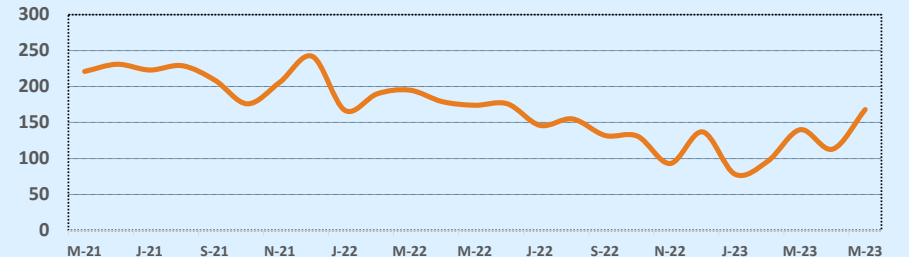
Average & Median Sales Price - Last Two Years



Months of Inventory - Last Two Years



Number of Sales - Last Two Years



Based on information from the Austin Board of REALTORS® (alternatively, from ACTRIS). Neither the Board nor ACTRIS guarantees or is in any way responsible for its accuracy. The Austin Board of REALTORS®, ACTRIS and their affiliates provide the MLS and all content therein "AS IS" and without any warranty, express or implied. Data maintained by the Board or ACTRIS may not reflect all real estate activity in the market.