

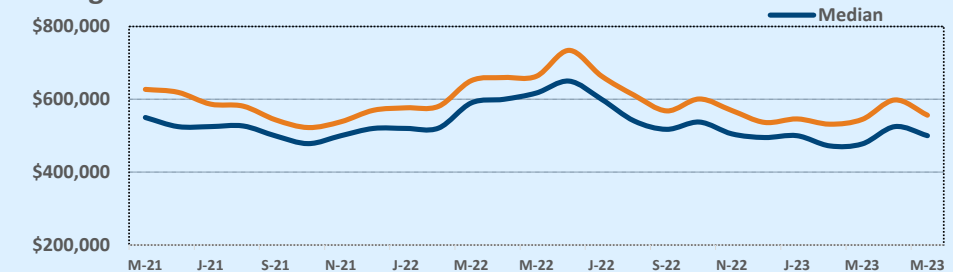
Listings	This Month			Year-to-Date		
	May 2023	May 2022	Change	2023	2022	Change
Single Family Sales	49	74	-33.8%	231	305	-24.3%
Condo/TH Sales	2	4	-50.0%	9	32	-71.9%
Total Sales	51	78	-34.6%	240	337	-28.8%
New Homes Only	--	6	--	16	21	-23.8%
Resale Only	51	72	-29.2%	224	316	-29.1%
Sales Volume	\$28,372,255	\$51,737,364	-45.2%	\$133,581,736	\$213,498,423	-37.4%
New Listings	98	95	+3.2%	369	396	-6.8%
Pending	50	N/A	N/A	56	N/A	N/A
Withdrawn	14	4	+250.0%	53	15	+253.3%
Expired	3	--	--	17	--	--
Months of Inventory	2.5	0.7	+260.7%	N/A	N/A	--

Average	This Month			Year-to-Date		
	May 2023	May 2022	Change	2023	2022	Change
List Price	\$556,938	\$619,474	-10.1%	\$568,885	\$600,601	-5.3%
List Price/SqFt	\$270	\$303	-11.1%	\$264	\$284	-7.2%
Sold Price	\$556,319	\$663,300	-16.1%	\$556,591	\$633,526	-12.1%
Sold Price/SqFt	\$268	\$325	-17.4%	\$258	\$301	-14.1%
Sold Price / Orig LP	99.5%	107.4%	-7.3%	98.0%	105.6%	-7.2%
Days on Market	19	12	+57.4%	47	18	+155.1%

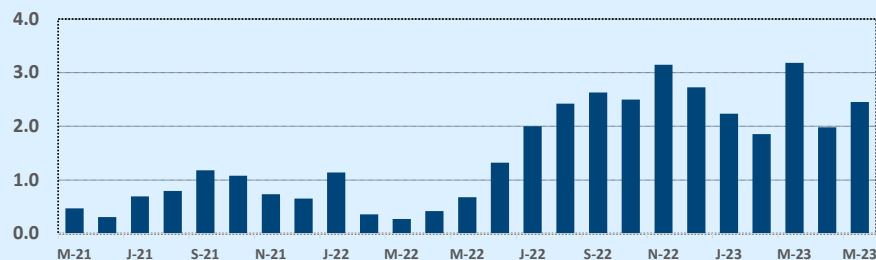
Median	This Month			Year-to-Date		
	May 2023	May 2022	Change	2023	2022	Change
List Price	\$500,000	\$590,543	-15.3%	\$500,000	\$545,830	-8.4%
List Price/SqFt	\$270	\$299	-9.5%	\$261	\$283	-7.8%
Sold Price	\$500,000	\$617,300	-19.0%	\$499,990	\$575,375	-13.1%
Sold Price/SqFt	\$271	\$321	-15.6%	\$252	\$295	-14.6%
Sold Price / Orig LP	100.0%	105.4%	-5.1%	98.6%	104.0%	-5.2%
Days on Market	7	5	+40.0%	28	5	+450.0%

Price Range	This Month			Year-to-Date		
	New	Sales	DOM	New	Sales	DOM
\$149,999 or under	--	--	--	--	--	--
\$150,000- \$199,999	--	--	--	--	--	--
\$200,000- \$249,999	--	--	--	--	--	--
\$250,000- \$299,999	--	--	--	--	--	--
\$300,000- \$349,999	--	1	28	1	2	19
\$350,000- \$399,999	2	7	31	24	22	50
\$400,000- \$449,999	20	10	41	54	50	51
\$450,000- \$499,999	20	7	12	65	49	47
\$500,000- \$549,999	10	7	14	48	30	61
\$550,000- \$599,999	14	4	11	51	20	41
\$600,000- \$699,999	7	7	9	52	28	40
\$700,000- \$799,999	8	2	4	22	17	46
\$800,000- \$899,999	5	1	2	18	7	25
\$900,000- \$999,999	8	3	11	18	6	10
\$1M - \$1.99M	3	2	5	14	8	53
\$2M - \$2.99M	--	--	--	1	1	56
\$3M+	1	--	--	1	--	--
Totals	98	51	19	369	240	47

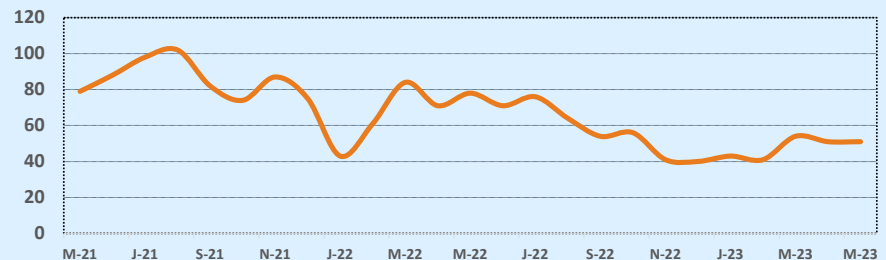
Average & Median Sales Price - Last Two Years



Months of Inventory - Last Two Years



Number of Sales - Last Two Years



Based on information from the Austin Board of REALTORS® (alternatively, from ACTRIS). Neither the Board nor ACTRIS guarantees or is in any way responsible for its accuracy. The Austin Board of REALTORS®, ACTRIS and their affiliates provide the MLS and all content therein "AS IS" and without any warranty, express or implied. Data maintained by the Board or ACTRIS may not reflect all real estate activity in the market.